

F

II  
**T** E lu-cis ante térmi-num, Re-rum Cre- á- tor, póscimus,  
 Ut pro tu- a cle-ménti- a, Sis præsul et cu-stó-di- a. 2. Pro-cul re-  
 cé-dant sómni- a, Et nó-cti- um phan-tásma-ta: Hostémque nostrum  
 cómprime, Ne pol-lu- án-tur córpo-ra. 3. Præsta, Pa-ter pi- ís-sime,  
 Pa-tríque compar U-ni-ce, Cum Spí-ri-tu Pa-rá-cli-to, Regnans per  
 omne sáe-cu-lum. A- men.

## K

**T** E lu- cis an-te tér-mi-num Re-rum Cre- á- tor, pósci-mus,  
 Ut pro tu- a cle-menti- a Sis præ-sul et custó- di- a. 2. Pro-cul re-  
 cé-dant sómni- a, Et nócti- um phantasma- ta, Hostémque nóstrum  
 cómprime, Ne pol- lu- án- tur cór- po- ra. 3. Præsta, Pa- ter pi- ís-  
 sime, Pa- tríque compar Ú- ni- ce, Cum Spí- ri- tu Pa- rá- cli- to  
 Regnans per omne sæ- cu- lum. A- men.

# H

**T**



E lu- cis ante térmi-num, Re-rum cre- á- tor, pó-scimus,



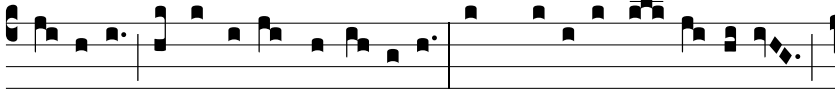
Ut pro tu- a cle- mén-ti- a, Sis práesul et cu- stó- di- a. Pro-



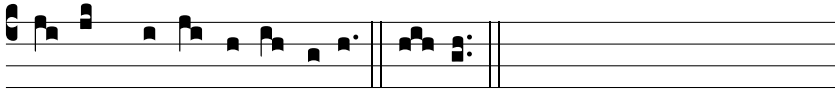
cul re- cé- dant sómni- a, Et nócti- um phan- tá- sma- ta : Hostémque



nostrum cómprime, Ne pol- lu- án- tur córpo- ra. Præsta, Pa- ter pi-



ís- sime, Pa- tríque compar U- ni- ce, Cum Spí- ri- tu Pa- rá- cli- to,



Regnans per omne sáe- cu- lum. A- men.

## A

VIII

**T** E lu-cis ante tér-mi-num, Re- rum Cre- á- tor, póscimus,

Ut pro tu- a clemé- ti- a, Sis præsul et cu- stó- di- a. 2. Pro- cul

re- cé- dant sóm- ni- a, Et nócti- um phantásma- ta: Hostémque nostrum

cómprime, Ne pol- lu- án- tur córpo- ra. 3. Præsta, Pa- ter pi- ís-

sime, Pa- tríque compar U- ni- ce, Cum Spí- ri- tu Pa- rá- cli- to,

Regnans per o- mne sáe- cu- lum. R̄. A- men.

## L

II

**T** E lu-cis an-te térmi-num, Re-rum Cre-á-tor, pó-sci-mus,

Ut pro tu-a cle-ménti-a, Sis præ-sul et cu-stó-di-a. 2. Pro-cul re-

cédant sómni-a, Et nócti-um phantásma-ta : Hostémque nostrum

cómprime, Ne pol-lu-án-tur córpo-ra. 3. Præsta, Pa-ter pi-ís-

sime, Pa-tríque compar U-ni-ce, Cum Spí-ri-tu Pa-rá-cli-to,

Regnans per omne sæ-cu-lum. A-men.

## G

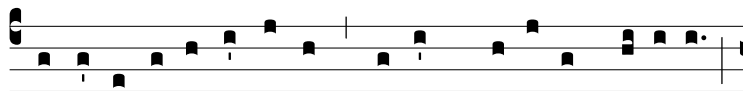
I  
**T** E lu-cis ante térmi-num, Re-rum Cre- á- tor, póscimus, Ut  
 pro tu- a cle-mén-ti- a, Sis præsul et cu-stó-di- a. 2. Pro-cul re-  
 cé-dant sómni- a, Et nócti- um phan-tásma-ta: Hostémque nostrum  
 cómpri-me, Ne pol-lu- án- tur córpo-ra. 3. Je-su, ti-bi sit gló-ri- a  
 Qui scepra mundi ténpe-ras, Cum Patre, et almo Spí- ri- tu, In  
 sempi-tér- na sécu-la. A- men.

The image shows a musical score for a Latin text. It consists of seven staves of music, each with a treble clef and a common time signature (C). The music is written in a simple, square-note style. The text is printed below the staves, with some words on a line above the staff and others below. The text is: "I Te lucis ante terminum, Re-rum Creator, poscimus, Ut pro tua clementia, sis praesul et custodia. 2. Procul recedant somnia, Et noctium phantasmata: Hostemque nostrum comprimere, Ne polluantur corpora. 3. Jesu, tibi sit gloria Qui scepra mundi temperas, Cum Patre, et almo Spiritu, In sempiterna secula. Amen." The word "I" is written above the first staff, and "T" is written above the first note of the first staff. The numbers "2." and "3." are placed between the staves to indicate different parts of the text.

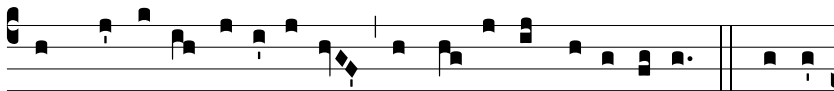
## D

VIII

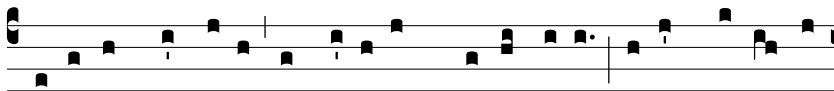
T



E lu-cis ante térmi-num, Re-rum Cre-á-tor, póscimus,



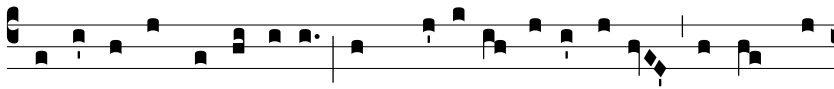
Ut pro tu-a cleménti-a, Sis præsul et custó-di-a. 2. Pro-cul



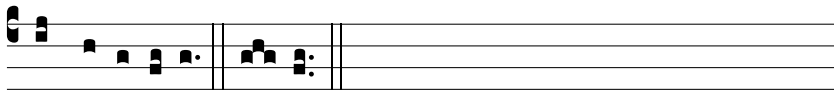
re-cé-dant sómni-a, Et nócti-um phantásma-ta: Hostémque nostrum



cómprime, Ne pol-lu-ántur córpo-ra. 3. Præsta, Pa-ter pi-ís-sime,



Pa-tríque compar U-ni-ce, Cum Spí-ri-tu Pa-rá-cli-to, Regnans per



omne sáecu-lum. A-men.

## O

VIII

**T** E lu-cis ante térmi-num, Re-rum Cre- á-tor, póscimus,

Ut pro tu- a cleméti- a, Sis præsul et custó-di- a. 2. Pro-cul re-

cé-dant sómni- a, Et nócti- um phantásma-ta: Hostémque nostrum

cómpri-me, Ne pol-lu- ántur córpo-ra. 3. Præsta, Pa-ter pi- ís-sime,

Pa-tríque compar U-ni-ce, Cum Spí-ri-tu Pa-rá-cli- to, Regnans per

omne sáecu-lum. A- men.



M

IV

**T** E lu-cis an-te térmi-num, Re-rum Cre-á-tor, pó-sci-mus,

Ut pro tu- a clemén-ti- a, Sis præsul et custó-di- a. 2. Pro-cul

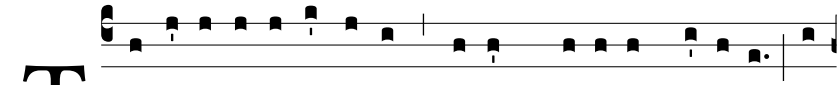
re-cé-dant sómni- a, Et nócti- um phan-tásma- ta: Hostémque

nostrum cómpri-me, Ne pol-lu-án-tur córpo- ra. 3. Præsta, Pa-ter

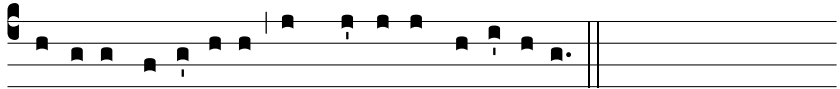
pi-ís-si- me, Pa-tríque compar U-ni- ce, Cum Spí-ri- tu Pa-rá-cli- to,

Regnans per omne sæcu- lum. A- men.

B



**T** E lú-cis ante térmi-num, Ré-rum Cre- á-tor, póscimus, Ut



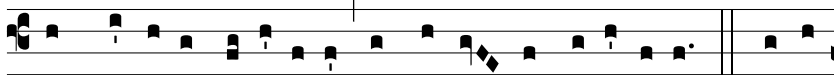
pro tú- a cleménti- a, Sis præ-sul et custó-di- a.

## C

II  
T



E lu- cis ante térmi-num, Re-rum Cre- á-tor, póscimus,



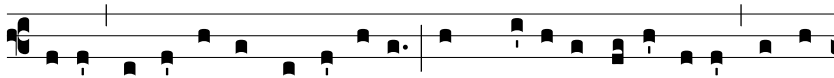
Ut pro tu- a clemé- ti- a, Sis præsul et custó- di- a. 2. Pro- cul



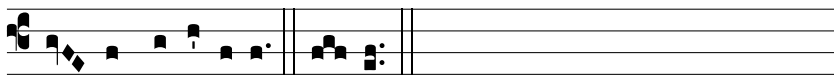
re- cé- dant sómni- a, Et nócti- um phantásma- ta: Hostémque nostrum



cómprime, Ne pol- lu- ántur córpo- ra. 3. Præsta, Pa- ter pi- ís-




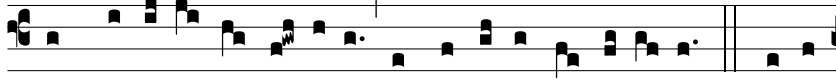
sime, Pa- tríque compar U- ni- ce, Cum Spí- ri- tu Pa- rá- cli- to, Regnans




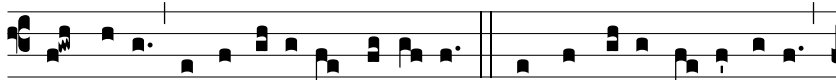
per omne sáecu- lum. A- men.

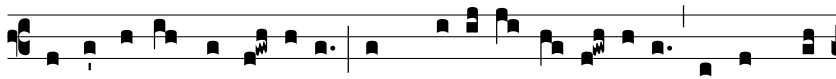
## E

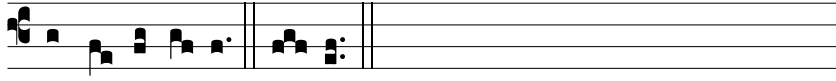

  
**T** <sup>II</sup> E lu-cis an-te térmi-num, Re-rum Cre-á-tor, pó-scimus,


  
 Ut pro tu- a cle-mén-ti- a, Sis práesul et cu-stó-di- a. 2. Pro-cul


  
 re-cé-dant sómni- a, Et nócti- um phantásma-ta: Hostémque nostrum


  
 cómprime, Ne pol-lu-ántur córpo-ra. 3. Præsta, Pa-ter pi-ís-sime,


  
 Pa-tríque compar U-ni-ce, Cum Spí-ri- tu Pa-rá-cli-to, Regnans per


  
 omne sæ-cu-lum. A- men.

## J

I  
**T** E lu-cis ante térmi-num, Re-rum Cre-á-tor, póscimus,  
 Ut pro tu- a cle-mén-ti- a, Sis præsul et cu-stó-di- a. 2. Pro-  
 cul re-cé-dant sómni- a, Et nócti- um phan-tásma-ta: Hostémque  
 nostrum cómpri-me, Ne pol-lu-án- tur córpo-ra. 3. Præsta, Pa-ter pi-  
 ís-sime, Pa-tríque compar U-ni-ce, Cum Spí-ri- tu Pa-rá-cli- to,  
 Regnans per o-mne sáecu-lum. A- men.

The image shows a musical score for a Latin text. It consists of seven staves of music, each with a treble clef and a key signature of one flat (B-flat). The music is written in a simple, block-note style. The lyrics are printed below the staves, with some words underlined. The text is: "Te lucis ante terminum, Re-rum Creator, poscimus, Ut pro tua clementia, sis praesul et custodia. 2. Procul recedant somnia, Et noctium phantasmata: Hostemque nostrum comprime, Ne polluantur corpora. 3. Præsta, Pater piissime, Patrique compar Unice, Cum Spiritu Patricio, Regnans per omne saeculum. Amen." The first staff begins with a large, bold letter 'T' that spans across the first two staves. There are double bar lines at the end of the first, second, and fourth staves, and a final double bar line at the end of the seventh staff.

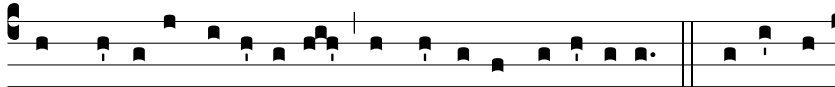
## I

VIII

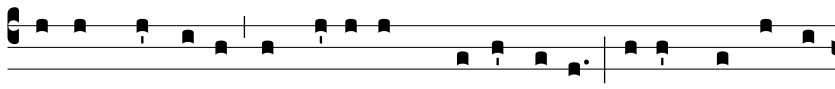
T



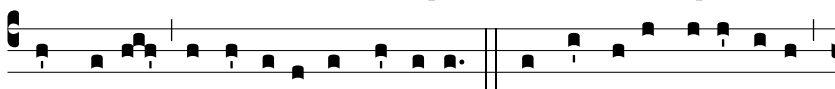
E lu-cis ante térmi-num, Re-rum Cre- á-tor, póscimus,



Ut pro tu- a clemé- ti- a, Sis præsul et custó- di- a. 2. Pro-cul re-



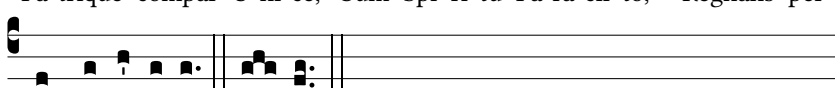
cé- dant sómni- a, Et nócti- um phantásma- ta: Hostémque nostrum



cómprime, Ne pol- lu- ántur córpo- ra. 3. Præsta, Pa- ter pi- ís- sime,



Pa- tríque compar U- ni- ce, Cum Spí- ri- tu Pa- rá- cli- to, Regnans per



omne sæcu- lum. A- men.

## N

III

**T** E lu-cis an- te térmi-num, Re-rum Cre- á- tor, pó-sci-

mus, Ut pro tu- a cle-mén-ti- a, Sis præsul et custó- di- a. 2.

Pro- cul re- cé- dant sómni- a, Et nó- cti- um phan- tásma- ta:

Hostémque no- strum cómpri-me, Ne pol- lu- án- tur cór- po- ra. 3.

Je- su, ti- bi sit gló- ri- a, Qui Cor- de fun- dis grá- ti- am, Cum

Pa- tre et al- mo Spí- ri- tu, In sempi- térna sée- cu- la. A- men.

1. Advent
2. Ascension
3. Blessed Virgin Mary
4. Christmas
5. ChristmasVespers
6. ChristusRex
7. Easter
8. Epiphany
9. Feasts
10. Feria
11. Lent
12. Passiontide
13. Pentecost
14. Regular
15. SacredHeart