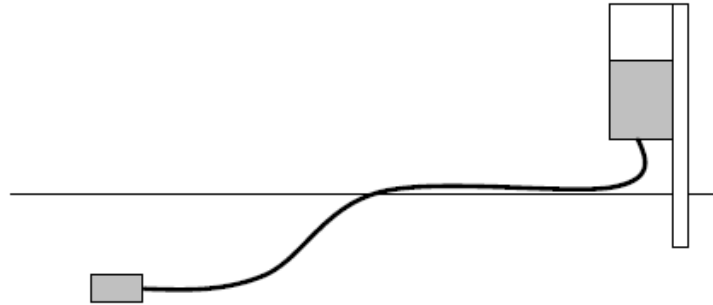


AGS Format Monitoring Data Example 08 - Hydraulic settlement cell



Project: Acme Gasworks
 Location: 539275, 179628
 Level of cell: -2.24mOD
 Instrument: SETT3

Date	Time	Change in level (mm)	Comments
03/05/1999	11:45	0	Base reading
04/05/1999	12:00	0	
05/05/1999	11:45	-1	
06/05/1999	11:30	-4.5	
07/05/1999	11:00	-8	
08/05/1999	12:45	-10.5	
09/05/1999	12:00	-12.5	
10/05/1999	11:45	-14	
11/05/1999	12:00	-15.5	
12/05/1999	11:45	-16.5	
13/05/1999	11:30	-17	
14/05/1999	11:00	-17	
15/05/1999	12:45	-17.5	
16/05/1999	12:00	-17.5	
17/05/1999	11:45	-17.5	
18/05/1999	12:00	-17.5	
19/05/1999	11:45	-18	
20/05/1999	11:30	-17.5	
21/05/1999	11:00	-18	
22/05/1999	12:45	-18	
23/05/1999	12:00	-18	
24/05/1999	11:45	-18.5	

AGS Format File (Edition 3.1)

```
***PROJ"
"*PROJ_ID","*PROJ_NAME","*PROJ_LOC","*PROJ_CLNT","*PROJ_CONT","*PROJ_ENG","*PROJ_DATE","*PROJ_AGS"
"<UNITS>","","","","","","dd/mm/yyyy",""
"Prj-AG","Acme Gasworks","Greenwich, London","Acme Enterprises","Acme Monitoring Ltd","Acme Consulting","17/10/2011","3.1"

***UNIT"
"*UNIT_UNIT","*UNIT_DESC"
"dd/mm/yyyy","day month year"
"hhmmss","hours minutes seconds"
"m","metre"
"deg","Degrees"
"mm","millimetre"

***ABBR"
"*ABBR_HDNG","*ABBR_CODE","*ABBR_DESC"
"HOLE_TYPE","INST","Instrument"
"MONP_TYPE","HSET","Hydraulic settlement cell"

***DICT"
"*DICT_TYPE","*DICT_GRP","*DICT_HDNG","*DICT_STAT","*DICT_DESC","*DICT_UNIT","*DICT_EXMP","*?DICT_PGRP"
"HEADING","DICT","DICT_PGRP","COMMON","Parent group name","","HOLE",""
"GROUP","MONP","","","Monitoring Point","","","HOLE"
"HEADING","MONP","HOLE_ID","KEY","Exploratory Hole Number","","6422/A",""
"HEADING","MONP","MONP_DIS","KEY","Distance of monitoring point from Reference Point","m","2.30",""
"HEADING","MONP","MONP_ID","KEY","Monitoring Point ID (optional)","","ZT102",""
"HEADING","MONP","MONP_DATE","COMMON","Installation Date","dd/mm/yyyy","01/02/2003",""
"HEADING","MONP","MONP_TYPE","COMMON","Installation Type","","TS",""
"HEADING","MONP","MONP_BRGA","COMMON","Bearing of monitoring axis A (compass bearing)","deg","090",""
"HEADING","MONP","MONP_INCA","COMMON","Inclination of instrument axis A (measured positively down from horizontal)","deg",""
"HEADING","MONP","MONP_RSCA","COMMON","Reading sign convention in direction A","","Displacment to East +ve",""
"GROUP","MONR","","","Monitoring Point Reading","","","MONP"
"HEADING","MONR","HOLE_ID","KEY","Exploratory Hole Number","","6422/A",""
"HEADING","MONR","MONP_DIS","KEY","Distance of monitoring point from Reference Point","m","2.30",""
"HEADING","MONR","MONP_ID","KEY","Monitoring Point ID (optional)","","ZT102",""
"HEADING","MONR","MONR_DATE","KEY","Date of reading","dd/mm/yyyy","20/02/2003",""
"HEADING","MONR","MONR_TIME","KEY","Time of reading","hhmmss","134000",""
"HEADING","MONR","MONR_DSPA","COMMON","Displacement in direction A","mm","24",""
"HEADING","MONR","MONR_REM","COMMON","Details of instrument reference, probe logger, serial numbers","",""

***HOLE"
"*HOLE_ID","*HOLE_TYPE","*HOLE_NATE","*HOLE_NATN","*HOLE_GL","*HOLE_FDEP"
"<UNITS>","m","m","m","m"
"SETT3","INST","539275","179628","-2.24",""

***?MONP"
"*?HOLE_ID","*?MONP_DIS","*?MONP_ID","*?MONP_DATE","*?MONP_TYPE","*?MONP_BRGA","*?MONP_INCA","*?MONP_RSCA"
"<UNITS>","m","","dd/mm/yyyy","","deg","deg",""
"SETT3","0","SETT3","15/04/1999","HSET","000","90","displacement down -ve"

***?MONR"
"*?HOLE_ID","*?MONP_DIS","*?MONP_ID","*?MONR_DATE","*?MONR_TIME","*?MONR_DSPA","*?MONR_REM"
"<UNITS>","m","","dd/mm/yyyy","hhmmss","mm",""
"SETT3","0","SETT3","03/05/1999","114500","0","Base reading"
"SETT3","0","SETT3","04/05/1999","120000","0",""
"SETT3","0","SETT3","05/05/1999","114500","-1",""
"SETT3","0","SETT3","06/05/1999","113000","-4.5",""
"SETT3","0","SETT3","07/05/1999","110000","-8",""
"SETT3","0","SETT3","08/05/1999","124500","-10.5",""
"SETT3","0","SETT3","09/05/1999","120000","-12.5",""
"SETT3","0","SETT3","10/05/1999","114500","-14",""
"SETT3","0","SETT3","11/05/1999","120000","-15.5",""
"SETT3","0","SETT3","12/05/1999","114500","-16.5",""
"SETT3","0","SETT3","13/05/1999","113000","-17",""
"SETT3","0","SETT3","14/05/1999","110000","-17",""
"SETT3","0","SETT3","15/05/1999","124500","-17.5",""
"SETT3","0","SETT3","16/05/1999","120000","-17.5",""
"SETT3","0","SETT3","17/05/1999","114500","-17.5",""
"SETT3","0","SETT3","18/05/1999","120000","-17.5",""
```

"SETT3","0","SETT3","19/05/1999","114500","-18",""
"SETT3","0","SETT3","20/05/1999","113000","-17.5",""
"SETT3","0","SETT3","21/05/1999","110000","-18",""
"SETT3","0","SETT3","22/05/1999","124500","-18",""
"SETT3","0","SETT3","23/05/1999","120000","-18",""
"SETT3","0","SETT3","24/05/1999","114500","-18.5",""